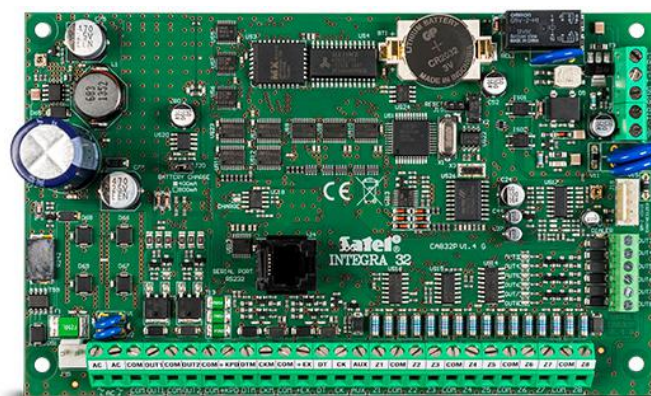


INTEGRA 32

ADVANCED CONTROL PANEL WITH 8 UP TO 32 ZONES

Advanced alarm control units providing alarm functions and optional implementation of home automation and access control systems. With a broad range of extension modules, their applications can be adapted to individual needs: from minor systems to extensive installations. Communication features combined with additional modules, such as GSM and TCP/IP, are a major advantage of the **INTEGRA** control units.

- 8 up to 32 zones
- 16 partitions, 4 objects
- 8 up to 32 programmable outputs
- keypads and expansion modules buses
- built-in telephone dialer with monitoring, voice messaging and remote control features
- access control and home automation features
- system operation with touchscreen keypads, LCD keypads, partition keypads, keyfobs and proximity cards or remotely with mobile phone or PC
- 28 independent timers for automatic control
- event log with 439 entries and event printing feature
- 64+4+1 users
- RS-232 port – RJ type socket
- flash firmware upgrade with a PC
- built-in 1.2 A switching mode backup power supply with battery charging and diagnostic features
- option of not reporting possible problems with connecting to the SATEL server as a failure



TECHNICAL DATA

| | |
|--|-------------------|
| Environmental class | II |
| Protection class | S |
| Max. battery capacity | 18 Ah |
| Control panels | 13,8 V DC |
| Low current programmable outputs rating | 50 mA |
| High current programmable outputs rating | 2000 mA |
| Power supply rating | 1,2 A |
| Board dimensions | 173 x 106 mm |
| Operating temperature range | -10...+55 °C |
| Main board supply voltage (±15%) | 18 V AC, 50-60 Hz |
| Standby mode current consumption | 127 mA |
| Max. current consumption | 234 mA |

